

MODULAR FORMWORK FOR WALLS,
ROUND AND SQUARE COLUMNS

FORMWORK SOLUTIONS

GEOTUB



04

GEOTUB PANEL



12

GEOPANEL STAR



17

GEOPANEL



24



- REUSABLE
- LIGHT
- MODULAR



FORMWORK VISION

*BUILD and RESPECT: this is the vision which characterizes the work of Geoplast.
To erect buildings respecting the environment. Beginning from the choice of the raw materials.
Our plastic formwork perfectly embodies this principle.*

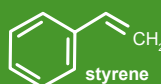
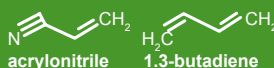
THE FUTURE IN ABS - TECHNOPOLYMER

Why ABS

(Acrylonitrile Butadiene Styrene)

An easy and intuitive system of modular formwork in technopolymer used to build walls, foundations and columns in concrete.

The wide range makes it easy to produce structures of any size and shape.



High mechanical strength

Shock resistance

Thermal stability
(-30°C / + 70°C; -22°F / + 158°F)

Very high surface quality

Recyclable material

FORMWORK ADVANTAGES



The only light, reusable and modular systems
for concrete structures production



light

Weighing just 11 kg,
GEOPLAST FORMWORK
can be handled quickly
on site without having
to use cranes or other
mechanical lifting devices



fast

Light and easy to
assemble, it can be
installed and handled by a
single person



modular

All systems are modular
and only the elements
necessary for the pour are
used



reusable

GEOPLAST FORMWORK
is cost effective as it can
be reused more than 100
times when properly used
and maintained



dismantling

Concrete does not stick
to plastic: dismantling is
extremely easy, the forms
can be cleansed using just
a little water, without any
need of detergent



storage

GEOPLAST FORMWORK
can be safely and
conveniently stored even
in damp places

geotub

reusable system in ABS



GEOTUB is the first formwork in technopolymer for the construction of round and oval columns; it is a complete system for the production of columns, both for residential and industrial use. Extremely light and modular, GEOTUB is a new idea of reusable formwork, easy to store and cleanable just with water.



GEOTUB THE MODULAR FORMWORK

Up to 80 kN/m² fresh concrete pressure

REUSABLE

GEOTUB MATERIAL

Acrylonitrile Butadiene Styrene	ABS
Coefficient of thermal expansion	0.05 mm/m/°C

SIZE

Minimum diameter	250 mm
Maximum diameter	1000 mm
Height	600 mm (actual size 605 mm)



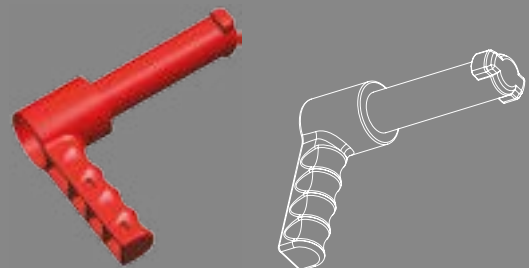
The handle

The standard fixing item
for all Geoplast Formwork

Light and intuitive

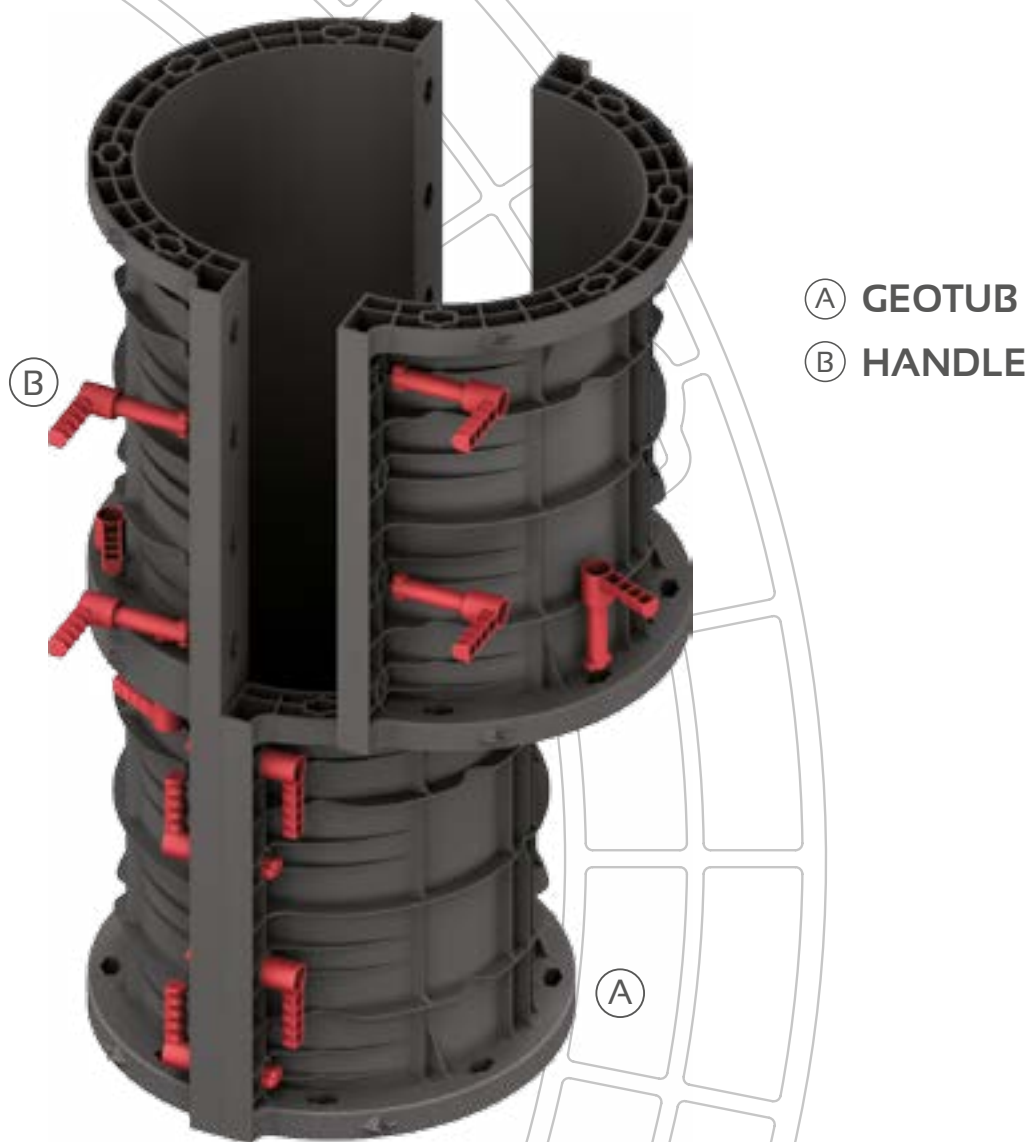
Firmly locks with a simple 90 degree turn

Strength (guaranteed by specially engineered materials)

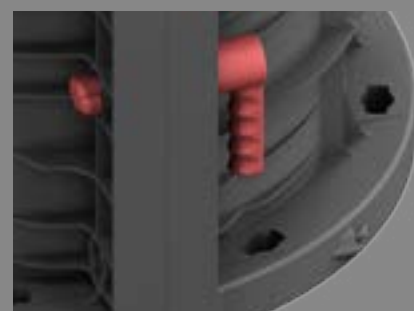
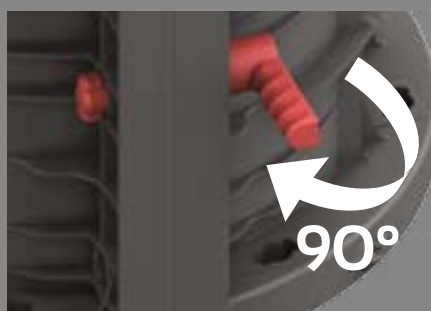
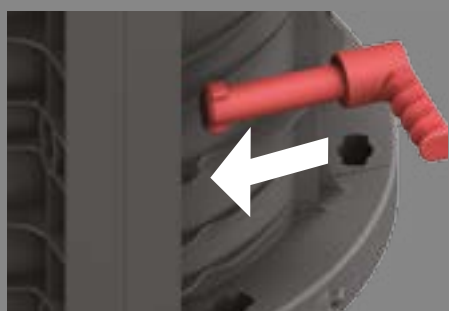


HANDLE MATERIAL: POLYAMIDE - COEFFICIENT OF THERMAL EXPANSION 7-10 (1/K 10⁻⁵)

GEOTUB INSTALLATION GUIDE



Handle locking



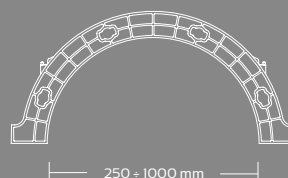
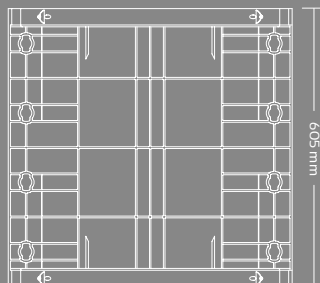
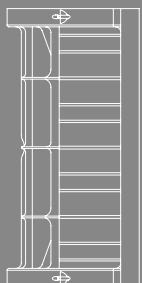
GEOTUB POUR HEIGHTS

GEOTUB configuration of a column












	○ ø Nominal diameter (mm)	○ Length of single form (mm)	○ Forms per column of 3 mt (pcs.)	○ No. handles per column of 3 mt (pcs.)	○ Column Length (mm)
ø25	250	605	10	60	3000
ø30	300	605	10	60	3000
ø35	350	605	10	70	3000
ø40	400	605	10	70	3000
ø45	450	605	10	80	3000
ø50	500	605	10	80	3000
ø60	600	605	10	90	3000
ø70	700	605	10	100	3000
ø80	800	605	10	100	3000
ø90	900	605	10	110	3000
ø100	1000	605	10	110	3000

Max. pour height (single pour)


ø25 - 40	ø45 - 60	ø70 - 100
6000 mm	4800 mm	3600 mm



GEOTUB

	PRODUCT	Actual size (mm)	Material	Weight (kg)	Package dimension (mm)	Nr. pieces per pallet	Nr. handles
	GEOTUB ø25	ø250 H605	ABS	2.96	810 x 1210 x H2200	60	6
	GEOTUB ø30	ø300 H605	ABS	3.69	930 x 1210 x H2450	60	6
	GEOTUB ø35	ø350 H605	ABS	4.28	1030 x 1210 x H2260	50	7
	GEOTUB ø40	ø400 H605	ABS	4.78	1140 x 1210 x H1900	40	7
	GEOTUB ø45	ø450 H605	ABS	5.22	1210 x 1230 x H2330	48	8
	GEOTUB ø50	ø500 H605	ABS	5.60	770 x 1210 x H2100	20	8
	GEOTUB ø60	ø600 H605	ABS	6.48	770 x 1210 x H2350	20	9
	GEOTUB ø70	ø700 H605	ABS	8.21	870 x 1210 x H2380	18	10
	GEOTUB ø80	ø800 H605	ABS	8.97	970 x 1210 x H2350	16	10
	GEOTUB ø90	ø900 H605	ABS	9.80	1070 x 1210 x H2530	16	11
	GEOTUB ø100	ø1000 H605	ABS	10.70	1170 x 1210 x H2400	14	11

ACCESSORIES*

	PRODUCT	Actual size (mm)	Material	Weight (kg)	Package dimension (mm)	Nr. pieces per pallet
	HANDLE	-	NYLON	0.1		200 (bag)

*See pag. 40 for more accessories

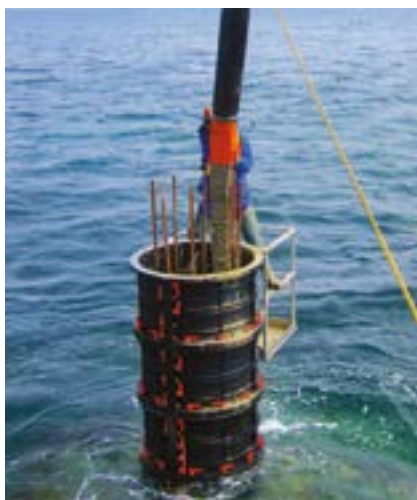
REUSABLE COLUMNS

GEOTUB is the first reusable plastic formwork for the construction of round columns. It allows a fast and easy dismantling without using releasing agents. The panels are very light: they can be handled and installed by a single person.



MARINE SOLUTIONS

As for all **GEOPLAST** formwork, **GEOTUB** is particularly suited to build columns when working in presence of water, which can make the work difficult and complicated. In this case the use of **GEOTUB** is the only possible solution, since it is made of ABS.



PRECAST COLUMNS



GEOTUB is ideal for the mass production of serial columns as it is very strong and it produces a very smooth concrete finish. Additionally it can be reused over than 100 times.



RENOVATION OF DETERIORATED COLUMNS



In the case of deteriorated concrete and exposed rebar it is necessary to repair columns restoring an adequate concrete cover. **GEOTUB** formwork system is ideally suited for this kind of repair job as it is usually installed around existing columns.



OVAL COLUMNS

Most of the **GEOPLAST** formwork panels share the same module and different systems are compatible with one another. **GEOPANEL** and the **GEOTUB** circular column formwork work together very efficiently to produce elliptic columns.



ELECTRICAL GRID PYLON FOUNDATIONS

GEOTUB is particularly suited for the construction of foundations for electricity pylons: this kind of construction site is essentially a series of relatively small jobs, often in remote or scarcely accessible locations. The low weight and ease of use make it very simple to handle and transport the **GEOTUB** forms from one site to the next.



geotub panel

the first reusable formwork in ABS

GEOTUB PANEL is a formwork system in technopolymer for the construction of square and rectangular columns.



GEOTUB PANEL THE MODULAR FORMWORK

Up to 60 kN/m² fresh concrete pressure

REUSABLE

max
10Kg

GEOTUB PANEL MATERIAL

Acrylonitrile Butadiene Styrene

ABS

Coefficient of thermal expansion

0.05
mm/m/°C

SIZE

Minimum side

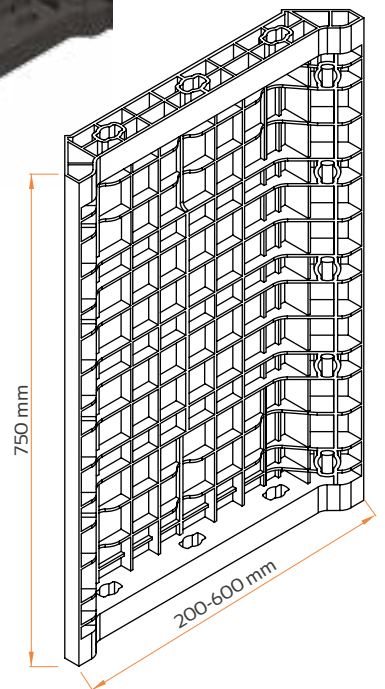
200 mm

Maximum side

600 mm

Height

750 mm



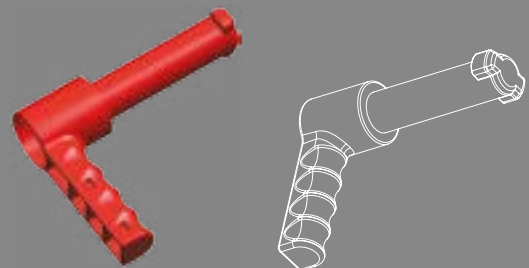
The handle

The standard fixing item
for all Geoplast Formwork

Light and intuitive

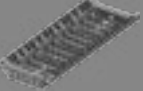
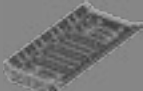
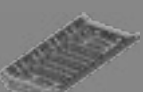


Firmly locks with a simple 90 degree turn

Strength (guaranteed by specially engineered materials)




HANDLE MATERIAL: POLYAMIDE - COEFFICIENT OF THERMAL EXPANSION 7-10 (1/K 10⁻⁵)

GEOTUB PANEL

	PRODUCT	Actual size (mm)	Material	Weight (kg)	Package dimension (mm)	Nr. pieces per pallet	Nr. handles
	GEOTUB PANEL 20	200 x 750 x 60	ABS	3.25	750 x 1200 x H2100	112	6
	GEOTUB PANEL 23	230 x 750 x 60	ABS	3.63	750 x 1200 x H2200	114	7
	GEOTUB PANEL 25	250 x 750 x 60	ABS	3.67	750 x 1200 x H2030	96	7
	GEOTUB PANEL 30	300 x 750 x 60	ABS	3.97	750 x 1200 x H2300	96	7
	GEOTUB PANEL 35	350 x 750 x 60	ABS	4.84	750 x 1200 x H2130	80	8
	GEOTUB PANEL 40	400 x 750 x 60	ABS	5.32	750 x 1200 x H2300	80	8
	GEOTUB PANEL 45	450 x 750 x 60	ABS	6.09	750 x 1220 x H2300	64	8
	GEOTUB PANEL 50	500 x 750 x 60	ABS	6.56	750 x 1230 x H2440	48	9
	GEOTUB PANEL 55	550 x 750 x 60	ABS	7.14	750 x 1350 x H2100	48	9
	GEOTUB PANEL 60	600 x 750 x 60	ABS	7.49	750 x 1450 x 2080	48	9

ACCESSORIES*

	PRODUCT	Actual size (mm)	Material	Weight (kg)	Package dimension (mm)	Nr. pieces per pallet
	HANDLE	-	NYLON	0.1		200 (bag)

*See pag. 40 for more accessories

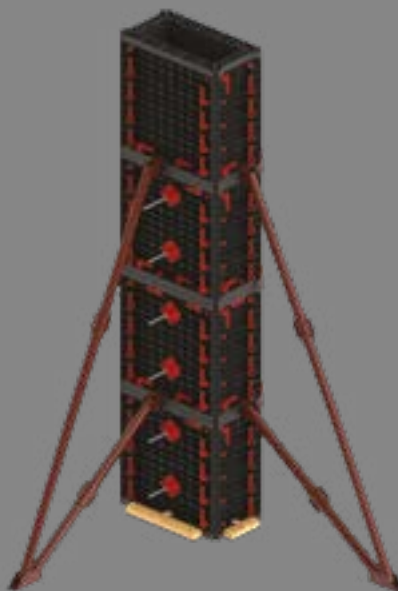
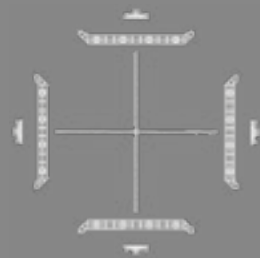
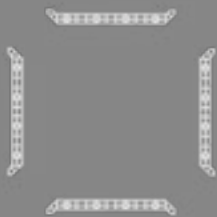
ALL THE COMBINATIONS

customizable modular system

size (cm)	20	23	25	30	35	40	45	50	55	60
20	20 x 20	20 x 23	20 x 25	20 x 30	20 x 35	20 x 40	20 x 45	20 x 50	20 x 55	20 x 60
23		23 x 23	23 x 25	23 x 30	23 x 35	23 x 40	23 x 45	23 x 50	23 x 55	23 x 60
25			25 x 25	25 x 30	25 x 35	25 x 40	25 x 45	25 x 50	25 x 55	25 x 60
30				30 x 30	30 x 35	30 x 40	30 x 45	30 x 50	30 x 55	30 x 60
35					35 x 35	35 x 40	35 x 45	35 x 50	35 x 55	35 x 60
40						40 x 40	40 x 45	40 x 50	40 x 55	40 x 60
45							45 x 45	45 x 50	45 x 55	45 x 60
50								50 x 50	50 x 55	50 x 60
55									55 x 55	55 x 60
60										60 x 60



- ☐ H 3 meters = 16 GEOTUB PANEL (8+8 with handles)
- ☒ H 3 meters = 16 GEOTUB PANEL (8+8 with handles + 6 tie rods of 1 m + 12 anchor nuts)
- ☒ H 3 meters = 16 GEOTUB PANEL (8+8 with handles + 12 tie rods of 1 m + 24 anchor nuts)



REUSABLE COLUMNS



No more timber or steel panels: a single light and fast installable formwork is enough. **GEOTUB PANEL-EL** is a modular formwork system in high resistance **ABS** which allows to build quickly square and rectangular columns. It does not require cuts or adaptations: only the necessary elements are used.



DOES NOT STICK TO CONCRETE, NO RELEASING AGENTS



The panels are very light: they can be manually moved and easily installed by a single person. The particularly smooth internal surface of **GEOTUB PANEL** system allows the installation of pillars and columns without using dismantling agents.



geopanel star

the universal formwork for columns

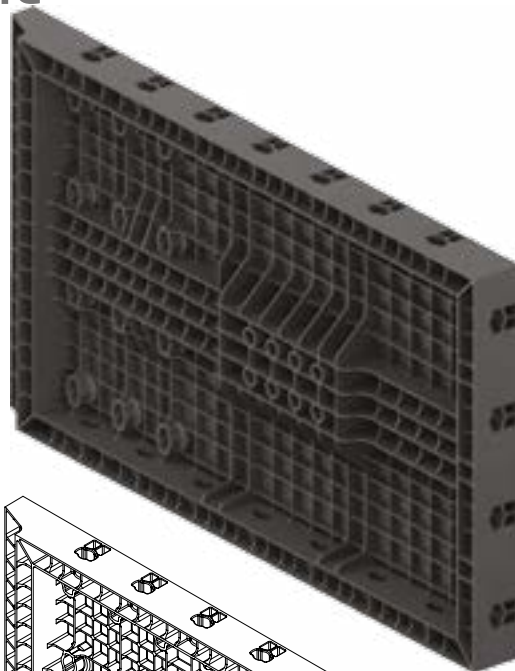
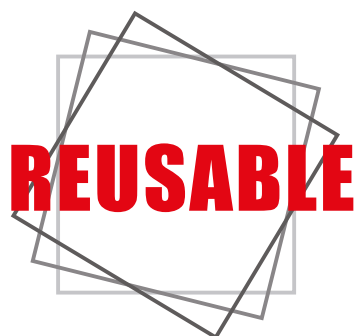


GEOPANEL STAR is an adjustable formwork for square and rectangular concrete columns. Made of ABS technopolymer, it is a new idea of formwork: light and modular, it's easy to handle and maintain, convenient to transport and to store for further use.



GEPANEL STAR MODULAR FORMWORK

Up to 80 kN/m² fresh concrete pressure

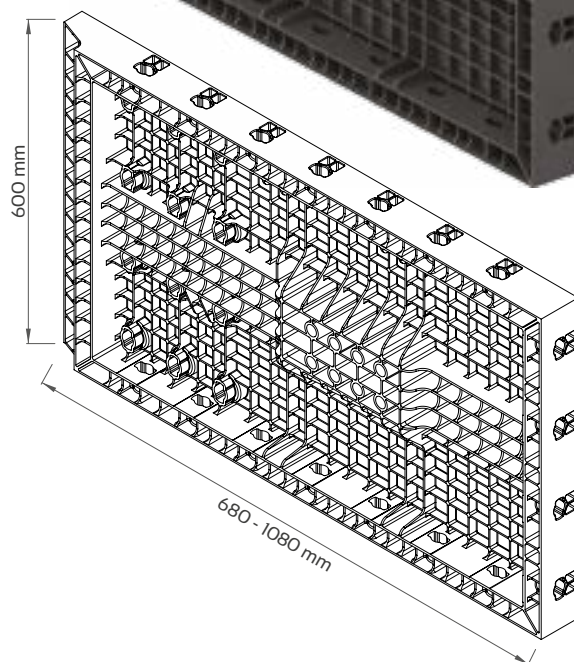


GEPANEL STAR MATERIAL

Acrylonitrile Butadiene Styrene	ABS
Coefficient of thermal expansion	0.05 mm/m/°C

SIZE

Smallest side	120 mm
Largest side	1000 mm
Height	600 mm (605 mm)



The handle

The standard fixing element
for all Geoplast Formworks

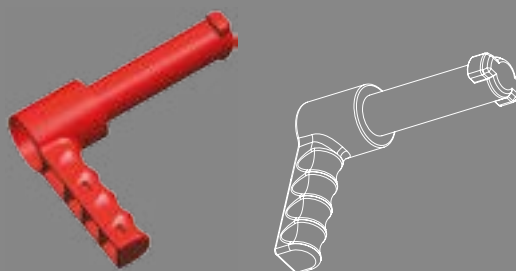
Light and intuitive

Firmly locks with a simple 90 degree turn

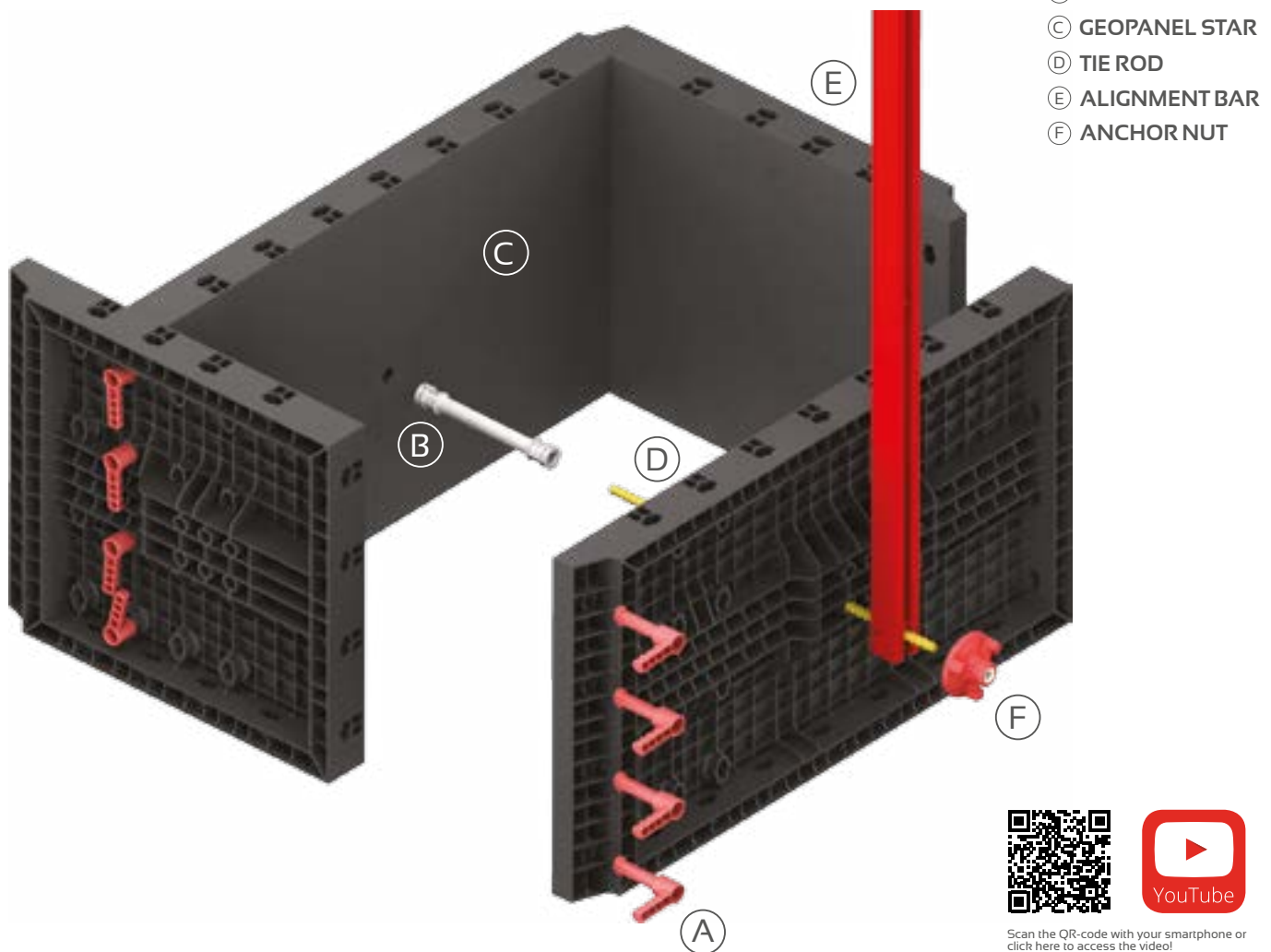
Strength guaranteed by special engineered materials

HANDLE MATERIAL: POLYAMIDE - COEFFICIENT OF THERMAL EXPANSION 7-10 (1/K 10⁻⁵)

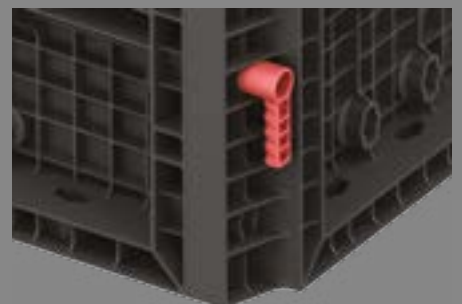
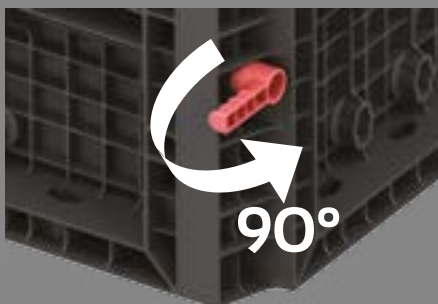
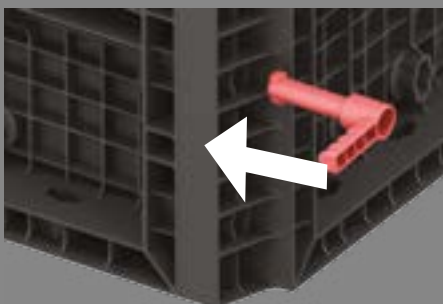
www.geoplast.it



GEOPANEL STAR INSTALLATION GUIDE



Handle locking



COMBINATIONS AND ELEVATIONS

COMBINATION
SIZES

STAR
12-15/20-60

STAR
25 - 65

STAR
70 - 100

STAR
12-15/20-60

A - B - D

A - B - D

C - E

STAR
25 - 65

A - B - D

C - E

STAR
70 - 100

F

The **GEOPANEL STAR** panel range is adjustable to a range of column sizes from 120 to 1000 mm.

The different panels can be combined with each other in order to obtain the desired size combination.

1

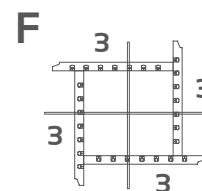
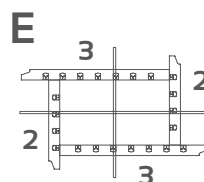
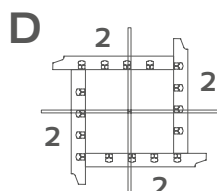
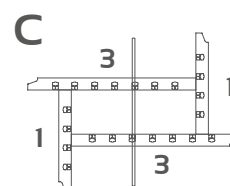
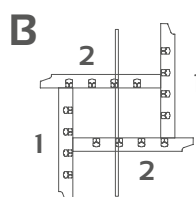
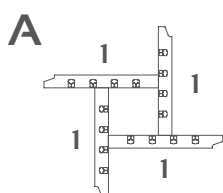
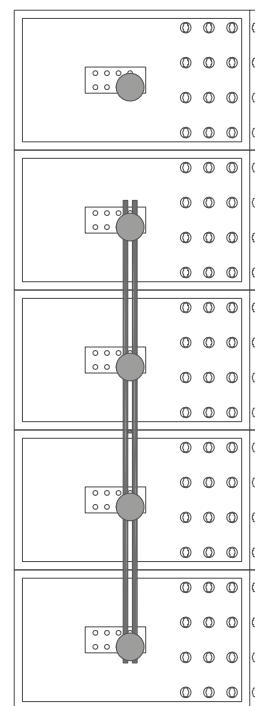
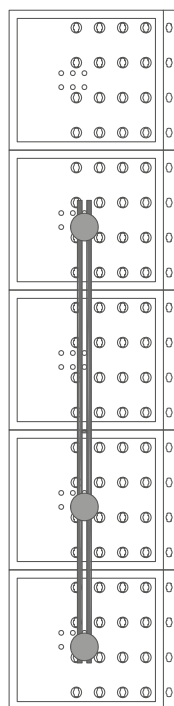
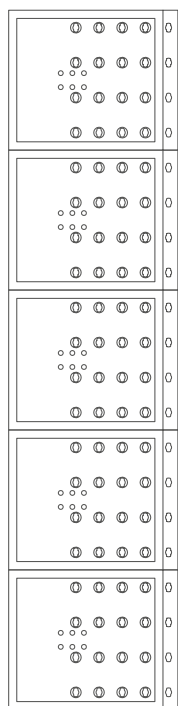
2

3

ELEVATION FOR SIDES EQUAL TO:
120, 150, 200, 250, 300, 350, 400 mm

ELEVATION FOR SIDES EQUAL TO:
450, 500, 550, 600, 650 mm

ELEVATION FOR SIDES EQUAL TO:
700, 800, 900, 1000 mm



Items and accessories

DIMENSIONAL TABLES

GEOPANEL STAR

PRODUCT	Actual size (mm)	Material	Weight (kg)	Package dimension (mm)	Nr. pieces per pallet	Nr. handles
GEOPANEL STAR 20-60	680 x 605 x 80	ABS	6.40	750 x 1200 x H2580	64	8
GEOPANEL STAR 25-65	730 x 605 x 80	ABS	6.80	750 x 1200 x H2580	58	8
GEOPANEL STAR 70-100	1080 x 605 x 80	ABS	9.60	750 x 1200 x H2580	40	11

OTHER ELEMENTS*

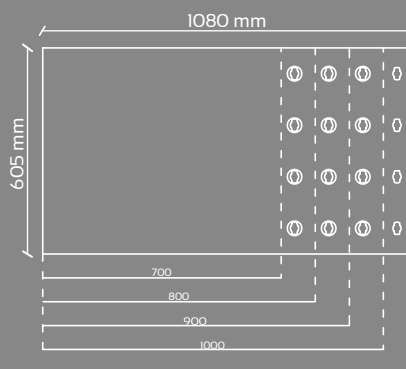
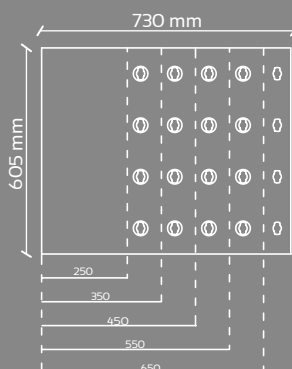
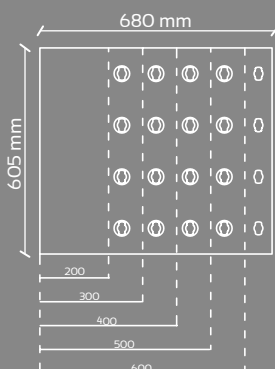
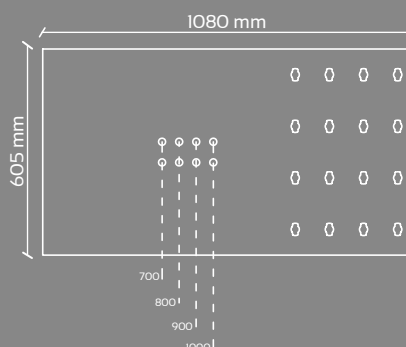
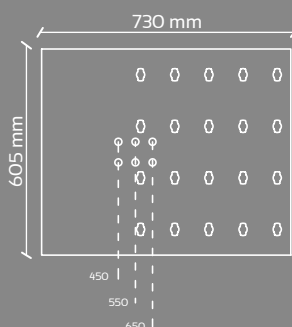
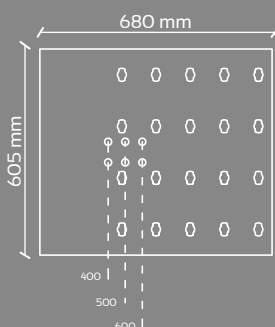
PRODUCT	Actual size (mm)	Material	Weight (kg)	Package dimension (mm)	Nr. pieces per pallet	Nr. handles
GEOPANEL 35x60	353 x 605 x 80	ABS	3.36	750 x 1200 x H2350	64	8
HANDLE	-	NYLON	0.1	200 (bag)	-	-

*See pag. 40 for more accessories

GEOPANEL STAR 20/60

GEOPANEL STAR 25/65

GEOPANEL STAR 70/100

DIMENSIONS
COLUMNS SIDESHOLES
TIER RODS

FOCUS GEOPANEL 35X60

The GEOPANEL 35 x 60 panel doubles as as GEOPANEL STAR 12-15: it is used to form column size of 120 and 150 mm and combines with all panels of the GEOPANEL STAR as well as the GEOPANEL ranges.



COLUMN APPLICATION



GEOPANEL STAR is a high-strength column formwork made of tough ABS polymer. It can take all the wear and tear of a construction site while simplifying the concrete forming tasks, reducing the crane workload and improving the site logistics.



COMBINATION WITH GEOPANEL



GEOPANEL STAR panels are perfectly compatible with the **GEO-PANEL** wall formwork. All panels of the two ranges interlock creating very interesting possibilities: extend over and beyond the size limits of the **GEOPANEL STAR** panels.



LARGE SCALE STRUCTURES

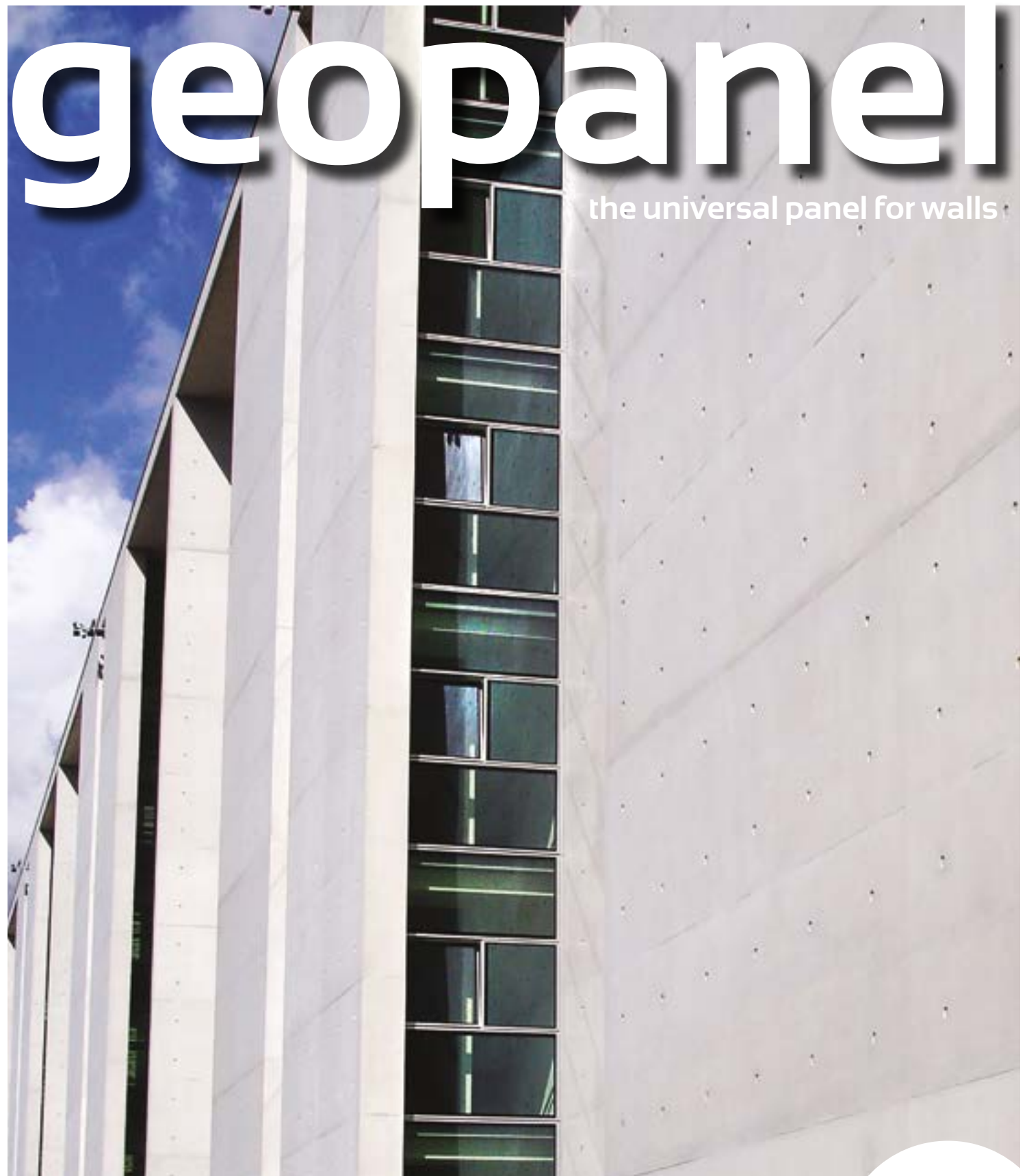
GEOPANEL STAR formwork is the ideal tool for RC frames: fast to erect and dismantle, can be handled both with and without a crane, is adjustable to large size range, does not need highly trained personnel for operation. A time saver and a cost-cutter.



FOUNDATION SPECIALIST

The **GEOPANEL STAR** formwork panels come into its own when used as a foundation formwork. Its versatility and ease of use make it ideal as footing and plinth-formwork.



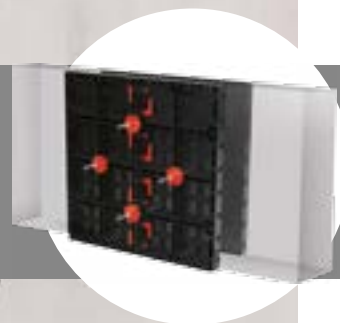


geopanel

the universal panel for walls

GEOPANEL is an easy and intuitive system of modular formwork in technopolymer used to build walls, foundations and columns in concrete.

The wide range makes it easy to produce structures of any size and shape.



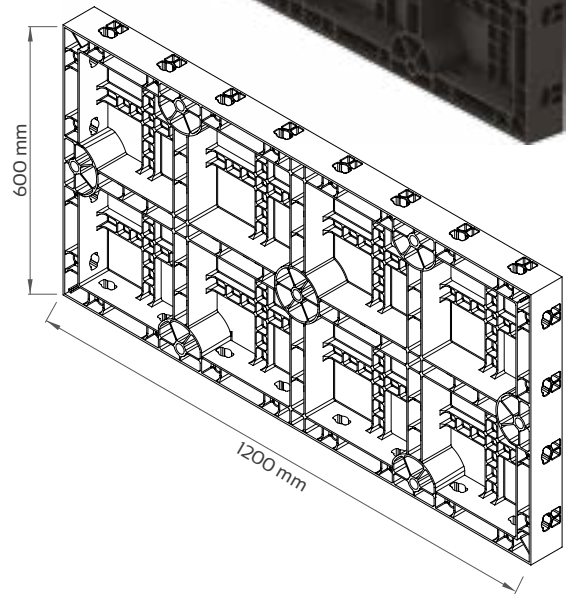
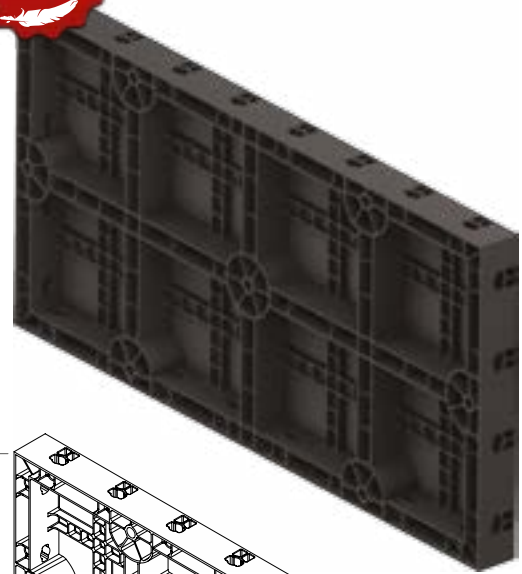
GEOPANEL 120 x 60

THE MAIN PANEL

Up to 60 KN/m² fresh concrete pressure

REUSABLE

just
11 Kg



GEOPANEL MATERIAL

Acrylonitrile Butadiene Styrene	ABS
Coefficient of thermal expansion	0.05 mm/m/°C

SIZE

LENGTH	1200 mm (actual size 1210 mm)
HEIGHT	600 mm (actual size 605 mm)
THICKNESS	80 mm

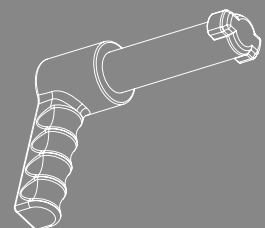
The handle

The standard fixing item
for all Geoplast Formwork

Light and intuitive

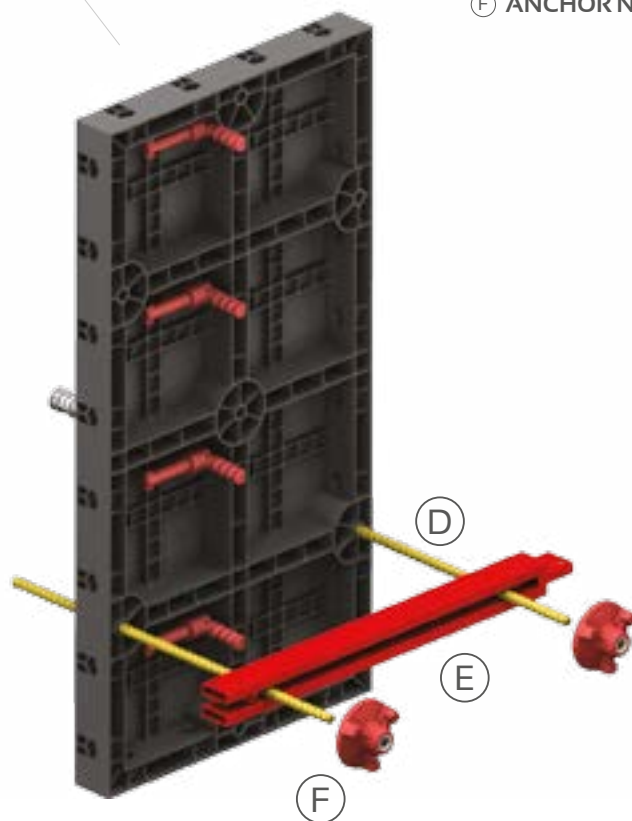
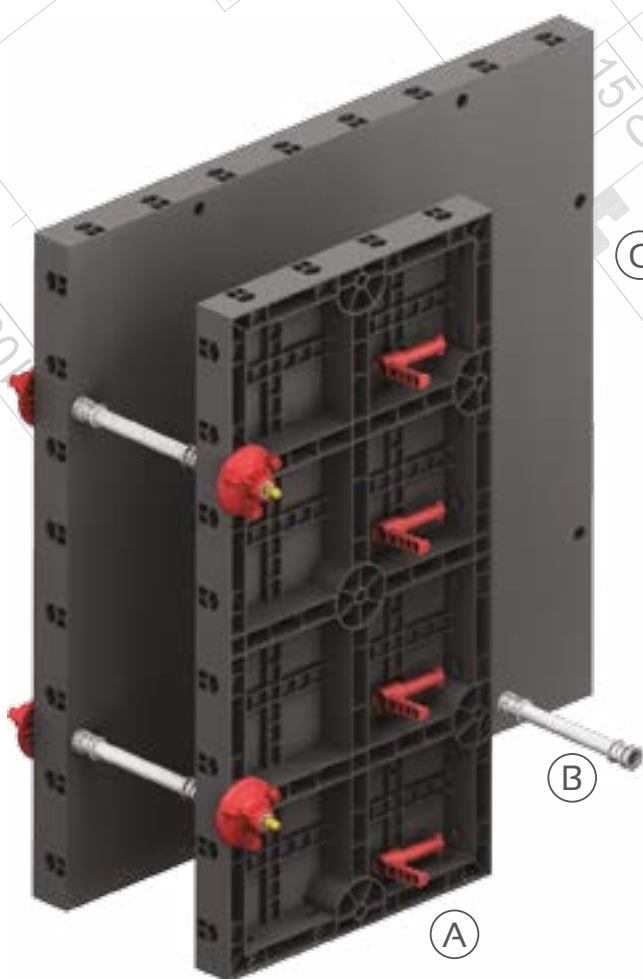
Firmly locks with a simple 90 degree turn

Strength (guaranteed by specially engineered materials)



HANDLE MATERIAL: POLYAMIDE - COEFFICIENT OF THERMAL EXPANSION 7-10 (1/K 10⁻⁵)

GEOPANEL INSTALLATION GUIDE



- Ⓐ HANDLE
- Ⓑ SPACER
- Ⓒ GEOPANEL 120x60
- Ⓓ TIE ROD
- Ⓔ ALIGNMENT BAR
- Ⓕ ANCHOR NUT

Handle locking



GEOPANEL

PRODUCT	Actual size (mm)	Material	Weight (kg)	Package dimension (mm)	Nr. pieces per pallet	Nr. handles
GEOPANEL 120x60	1210 x 605 x 80	ABS	11	750 x 1210 x H2580	38	12
GEOPANEL 20x60	202 x 605 x 80	ABS	2.38	770 x 1210 x H2350	204	5
GEOPANEL 25x60	252 x 605 x 80	ABS	2.62	770 x 1210 x H2400	166	5
GEOPANEL 30x60	303 x 605 x 80	ABS	2.94	770 x 1210 x H2400	140	5
GEOPANEL 35x60	353 x 605 x 80	ABS	3.36	750 x 1210 x H2350	118	6
GEOPANEL 40x60	404 x 605 x 80	ABS	3.70	770 x 1210 x H2400	104	6
GEOPANEL inner corner	303 x 605 x 80	ABS	4.03	810 x 1210 x H2400	128	5
GEOPANEL outer corner	252 x 605 x 80	ABS	3.12	800 x 1210 x H2300	130	5

GEOPANEL WP / CL

PRODUCT	Actual size (mm)	Material	Weight (kg)	Package dimension (mm)	Nr. pieces per pallet	Nr. handles
GEOPANEL WP	100 x 605 x 80	ABS	1.40	800 x 1200 x H2450	450	4
GEOPANEL CL 20-25-30	460 x 605 x 80	ABS	5.25	750 x 1200 x H2500	91	6
GEOPANEL CL 35-40-45	610 x 605 x 80	ABS	6.28	750 x 1200 x H2550	76	7

ACCESSORIES

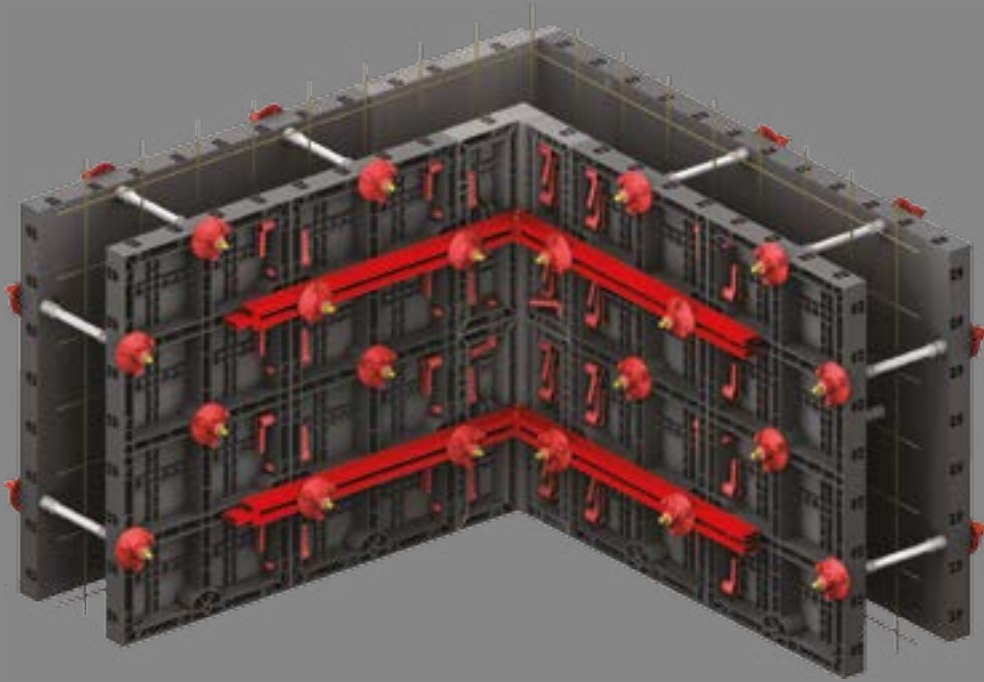
PRODUCT	Actual size (mm)	Material	Weight (kg)	Package dimension (mm)	Nr. pieces per pallet
HANDLE	-	NYLON	0.1		200 (bag)

*See pag. 40 for more accessories

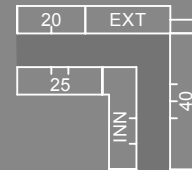
www.geoplast.it

DIMENSIONAL TABLE

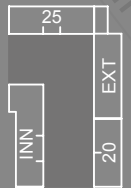
CORNER CONFIGURATION



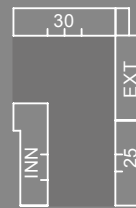
THICKNESS 100 mm



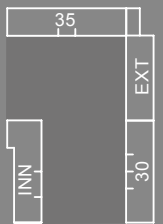
THICKNESS 150 mm



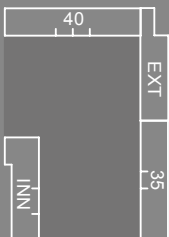
THICKNESS 200 mm



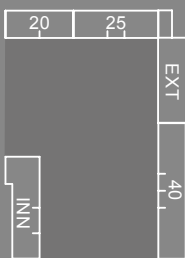
THICKNESS 250 mm



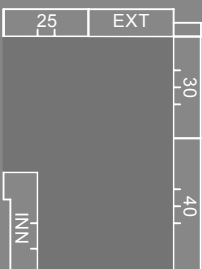
THICKNESS 300 mm



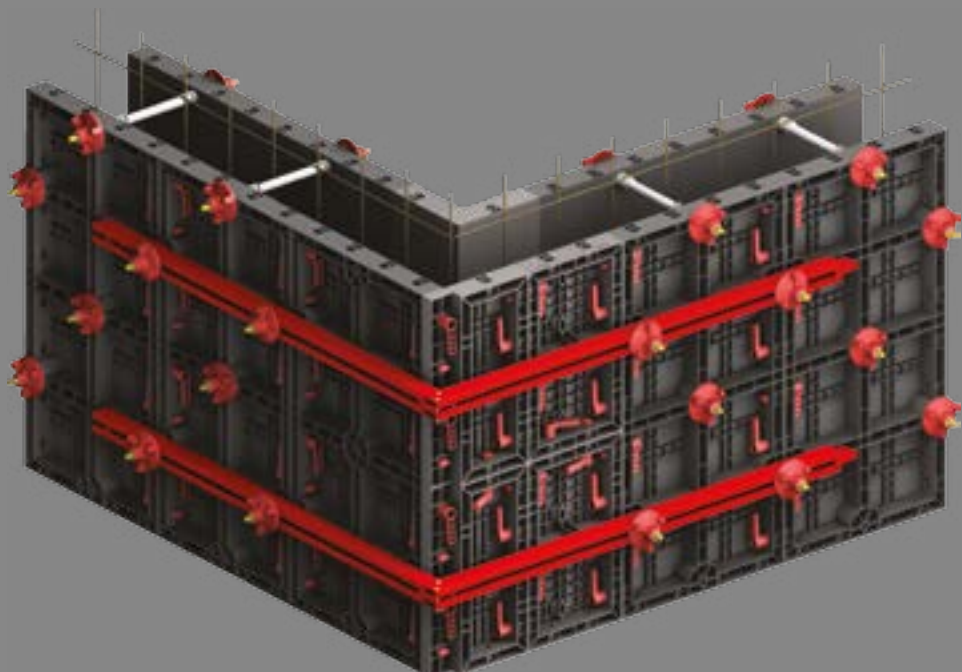
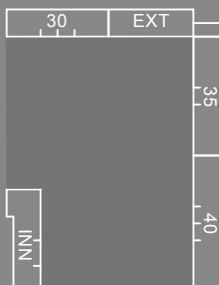
THICKNESS 350 mm



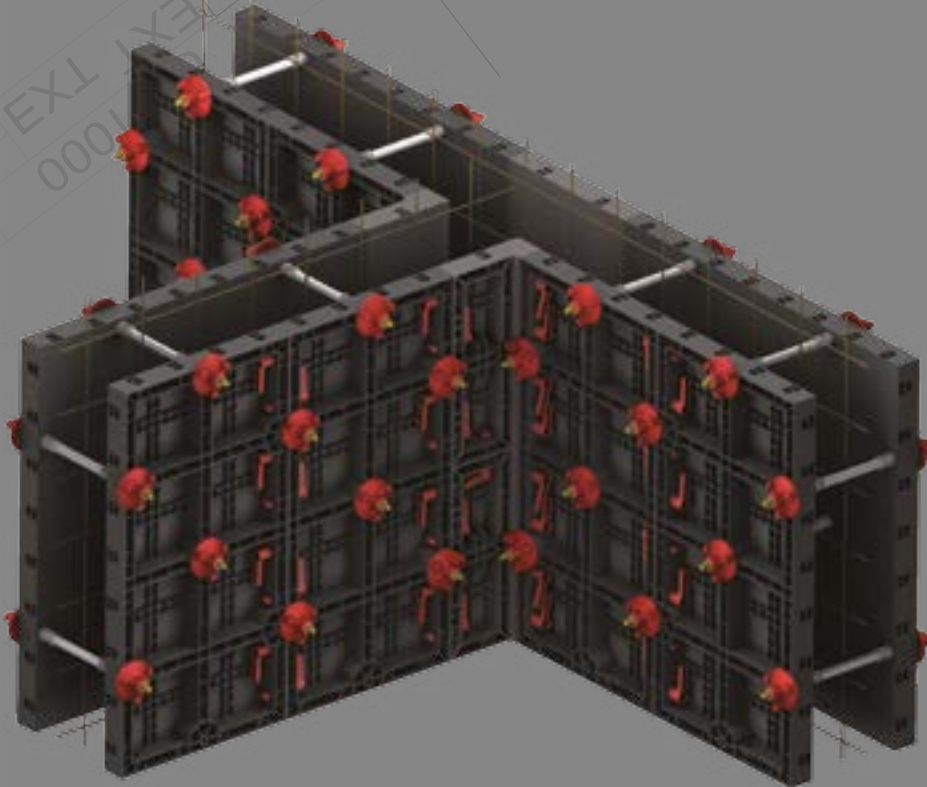
THICKNESS 400 mm



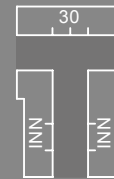
THICKNESS 450 mm



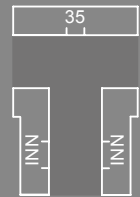
T-INTERSECTIONS



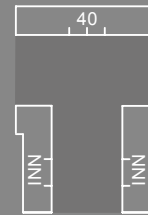
THICKNESS 100 mm



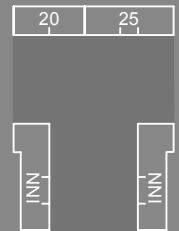
THICKNESS 150 mm



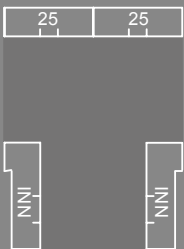
THICKNESS 200 mm



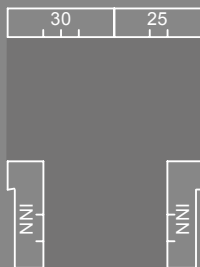
THICKNESS 250 mm



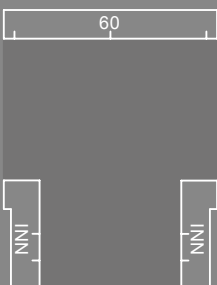
THICKNESS 300 mm



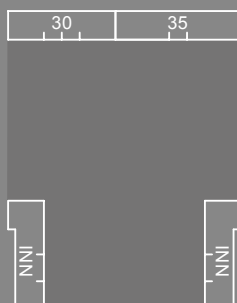
THICKNESS 350 mm



THICKNESS 400 mm



THICKNESS 450 mm



GEPANEL WALLS



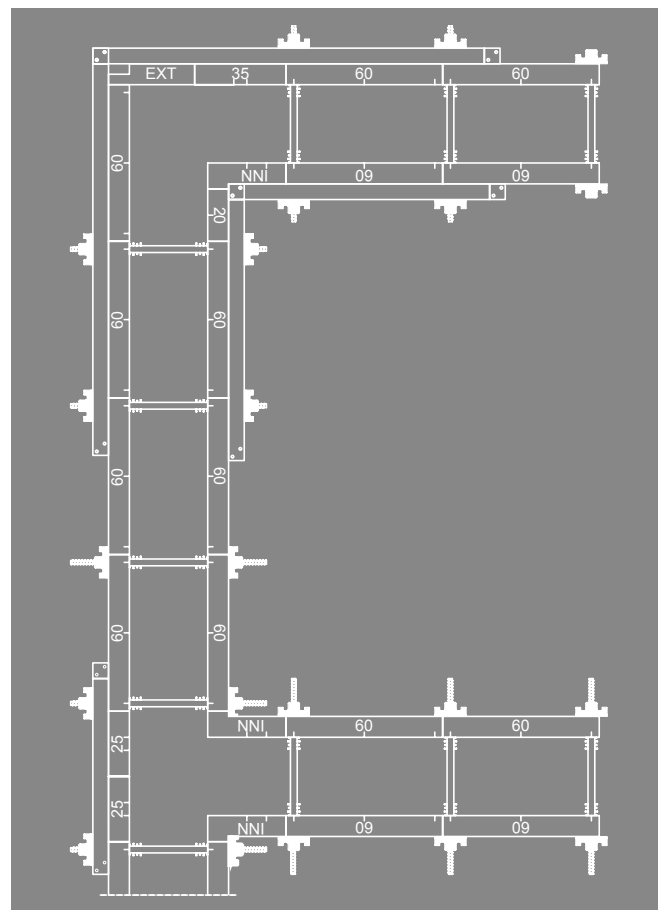
Geopanel system

GEPANEL allows the production of walls of any thickness and height. The wide range of items and sizes meet any requirements. As the panels are made of plastic material (ABS), the concrete finish

is extremely smooth and uniform, ensuring high quality. The panels are handled effortlessly as they are extremely light (max. 11 kg) making production fast even with a single worker.



www.geoplast.it



GEOPANEL HOUSING SYSTEM



High productivity concrete houses

Governments, builders and individuals in developing countries are facing an exponential growth in demand for housing: it is therefore increasingly urgent to find a solution to build houses quickly and cost-effectively. Thanks to its lightness and maneuverability, **GEOPANEL** is the ideal solution to build customized buildings as social houses and terraced houses in a short

time and at low costs. Not requiring the use of mechanical devices to handle it, **GEOPANEL** can be used and installed in every plot of land, even in the most inaccessible ones. To complete the construction of housing with a high value for money, we recommend **GEOPLAST MODULO** system to ventilate the foundations.



PLINTH & STRIP FOUNDATIONS



GEOPANEL comes into its own when used as a foundation formwork. Its versatility and ease of use make it ideal as footing and plinth formwork, making the task really easy.



RING BEAMS LINTELS & INFIL WALLS



GEOPANEL is light and of manageable size. These features make it the ideal formwork system for use inside buildings and in other areas of a construction site that are inaccessible to lifting devices.



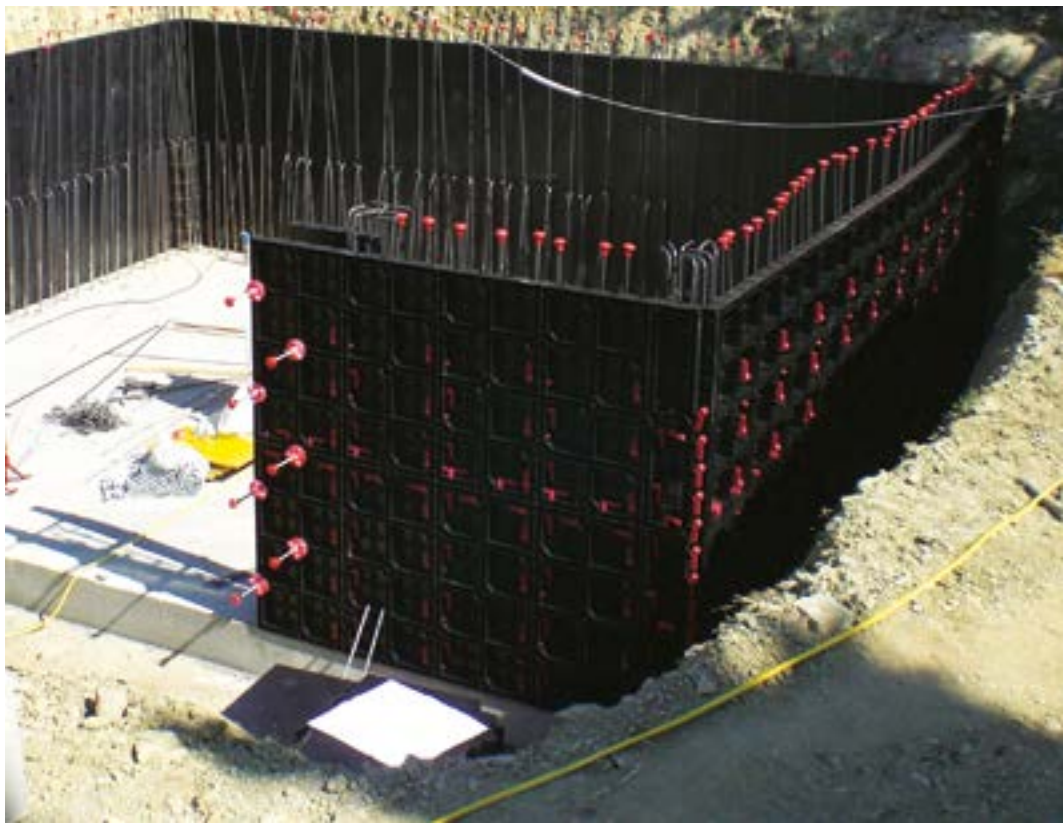
ELEVATOR SHAFTS STAIRWELLS

GEOPANEL is ideal for the construction of stairwells and elevator shafts. The lightness and easier handling of the panels allow carpenters to speed up the setup and dismantling, giving them the possibility to repeat the operations quickly in the various floors of the building.



GEOPANEL BUNKER

Manual handling and easy set-up of the panels make **GEOPANEL** suitable for any type on-site requirement. The accessories included in the system make it easy to form corners and wall intersections without needing fill-in elements.



GEOPANEL & GEOPANEL STAR



GEOPANEL panels are compatible with the **GEOPANEL STAR** range. **GEOPLAST** system's modularity allows the construction of particular configurations such as columns integrated in concrete walls. It is thus possible to achieve this technical solution with a single pour.



GEOPANEL COLUMNS



GEOPANEL is used to form large columns in combination with **GEOPANEL STAR**. The two panel systems work very well together as they share the same module.



GEOPANEL POOLS

Infinite custom variations of size and shape can be produced using the large range of panels and accessories. **GEOPANEL** will work perfectly with the complex equipment of the pool. It is also possible to create sloping floors, thus creating diving areas and relax zones.

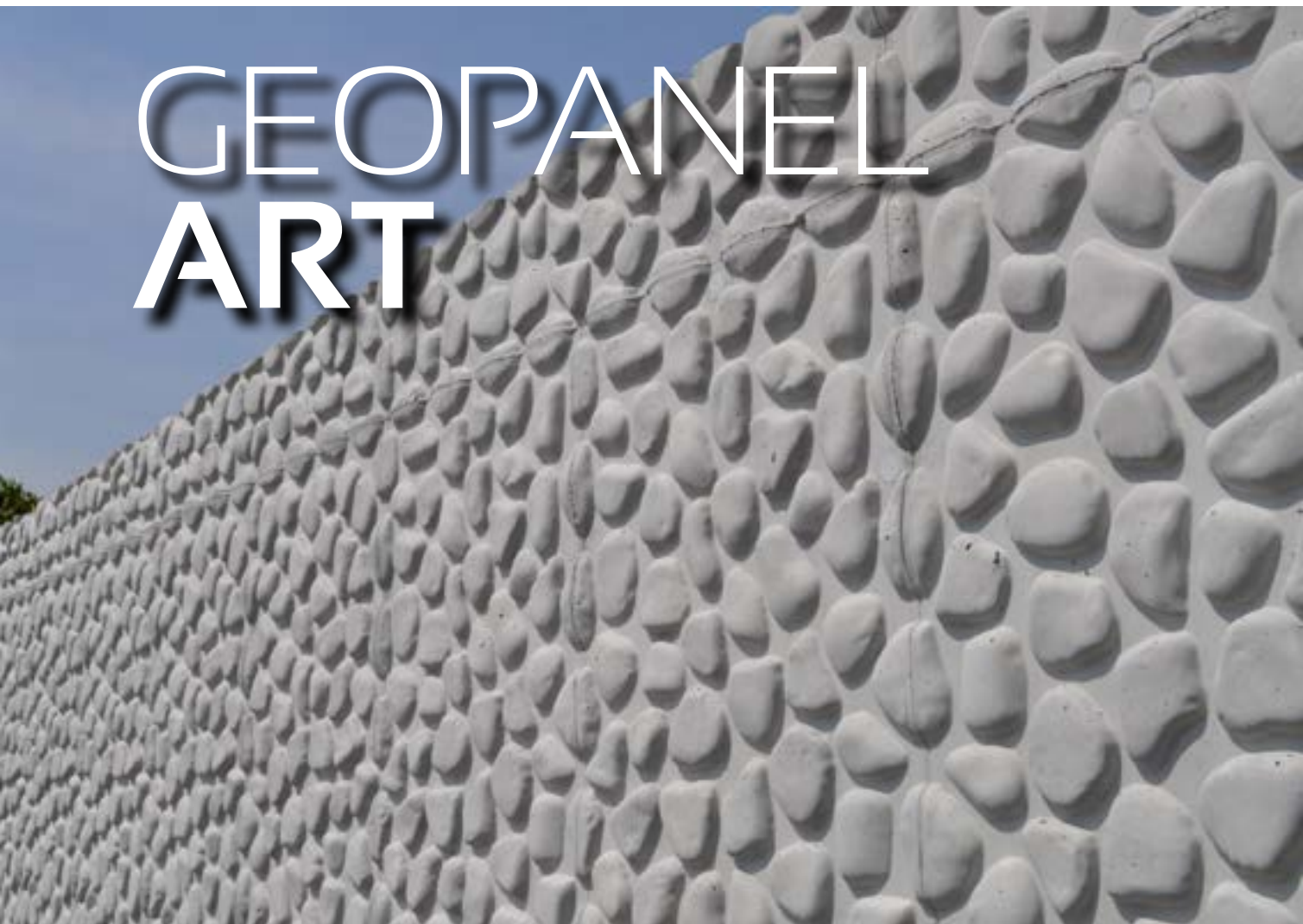


GEOPANEL SHEAR WALLS

Shear walls are built to counter the effects of lateral load such as wind or earthquakes acting on a structure. Easy to handle, **GEOPANEL** system is excellently suited for this type of application.



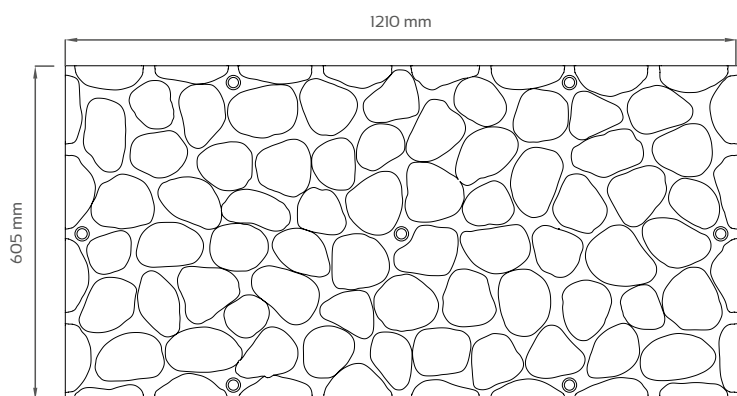
GEO PANEL ART



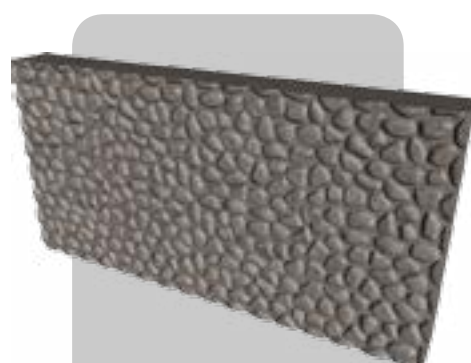
Panels for textured walls

This is a reusable and modular high-resistance formwork panel used to create textured reinforced concrete walls. Made of ABS, **GEO PANEL ART** is used in combination with **GEO-PANEL**. The two elements are assembled to create a high-productivity mold for the production of textured concrete. The con-

crete surface receives the decoration from the panels and the result is a wall ready to be painted or further decorated in order to achieve an even more realistic and creative look. Replicating the pebbles of a mountain stream, the River Stone panel is irregularly shaped to obtain a very "real looking" result.



www.geoplast.it



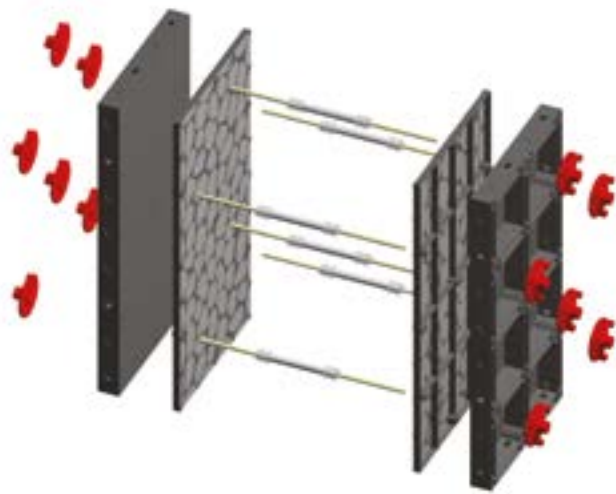
GEO PANEL ART

actual size (mm)	1210 x 605 x 25
material	ABS
weight (kg)	4.46
package size (mm)	1200 x 750 x H2020
No. pcs.	80

GEOPANEL ART ADVANTAGES

Simple and easy to use, **GEOPANEL ART** helps you save time and money. Results are immediate and no further action is needed on the decorated wall. Light and easy to handle, **GEOPANEL ART** is a product with an excellent benefit-cost ratio.

Immediate result
High quality concrete finish
Reusable
Customizable



How to assemble

GEOPANEL ART panels are clipped onto the **GEOPANEL** 1200 x 600 mm panels using the tie rods holes as latching points. Standard tie rods and anchor nuts are used to hold them tightly in position. Plastic spaces sleeves are inserted between the panels and are lost after the concrete pour.

The panels can be assembled in any combination without interrupting the decorative texture. **GEOPANEL ART** is easy to handle and can be simply dismantled from **GEOPANEL** panels after use. The forms can be then cleaned just with water.



ON REQUEST

Woodline



Prun



Wall



Line



GEOSKY SLABS

Reusable ABS formwork for concrete slabs



Geopanel goes **flat out**

GEOSKY is a reusable roof slab formwork system which uses elements and a series of plastic supporting beams. The panels ensure a very good and consistent concrete surface quality. The plastic beams are designed to allow strip-

ping of the concrete slab shortly after the pour, dramatically decreasing the turn-around time of the formwork thus allowing a much tighter pour schedule. The whole system rests on standard H20 timber beam.

ADVANTAGES

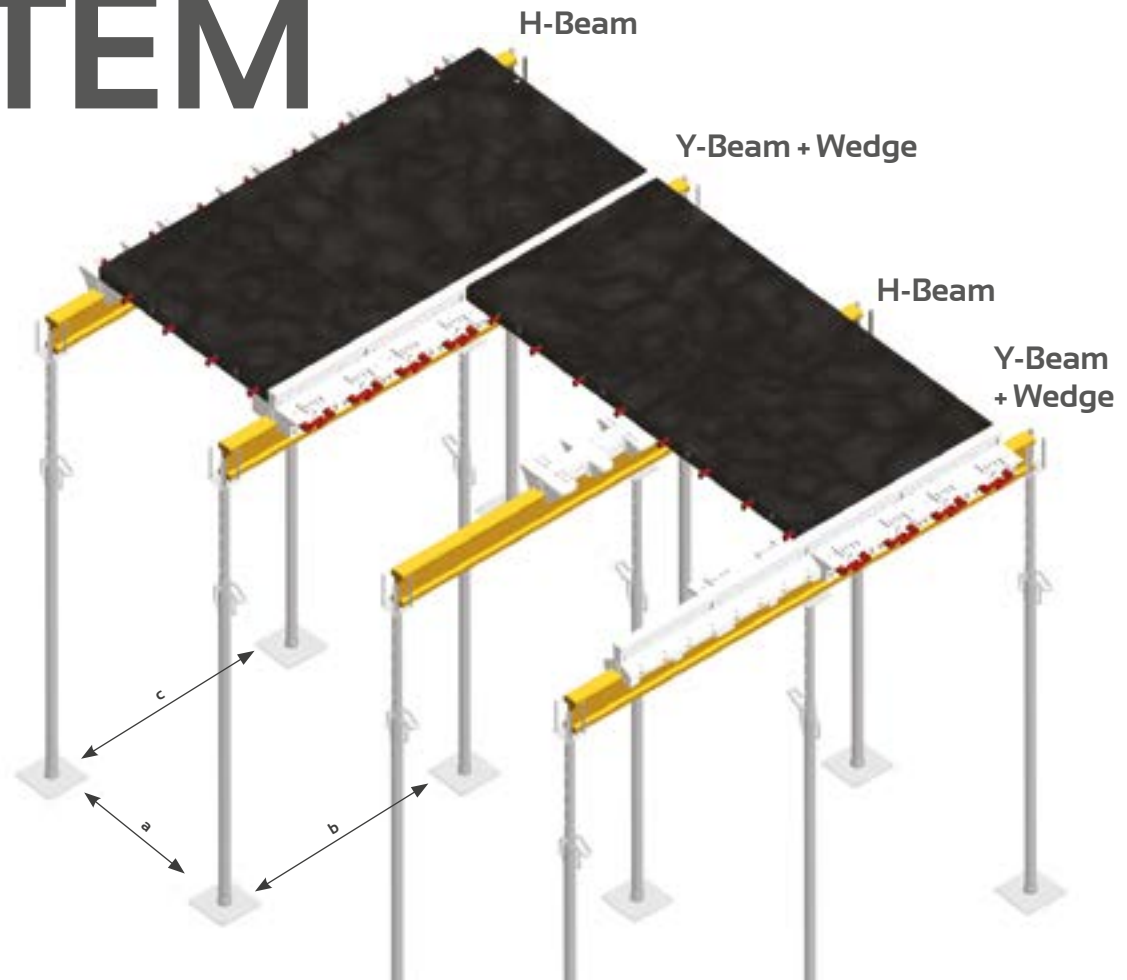
Advanced
dismantling
Modular
Safe



COMPLETE GEOSKY SYSTEM

Thanks to the access from below, **GEOSKY** allows safer working conditions, avoiding fall hazard from heights, during both set-up and dismantling.

GEOSKY is suitable for the production of roof slabs for commercial, industrial and residential buildings.



System items and shoring criteria



Y-BEAM

Lodges onto standard H20 timber beams with WEDGES which allow the advanced dismantling of the formwork panels



WEDGE

This item allows the advanced dismantling. When detached from the Y-beam makes the removal of the panels possible



H-BEAM

Panel support element, it is one of the first elements to be removed during dismantling



HS-BEAM

Panel support element. Useful replacement of the HS-Beam in some formwork configuration.



SLAB THICKNESS (mm)

	Up to 200	Up to 250	Up to 350	Up to 400
Prop spacing H20 Beam (a)	1.25 m	1.25 m	0.60 m	0.60 m
Props for Y-Beam + Wedge (b)	1.50 m	1.00 m	1.50 m	1.00 m
Props for H-Beam (c)	1.50 m	1.50 m	1.50 m	1.50 m

FORMWORK ACCESSORIES

	ACCESSORIES	MATERIAL	WEIGHT (kg)				
	HANDLE	Nylon	0.1	✓	✓	✓	✓
	CUP 25	HD PE	0.006	✗	✓	✓	✓
	CUP 43	ABS	0.014	✗	✗	✓	✗
	SPACER 150/200/250 300/350/400	HD PE	0.035 -> 0.070	✗	✓	✓	✓
	TIE ROD 300/750 1000/1500	ABS	0.430 -> 2.150	✗	✓	✓	✓
	ANCHOR NUT	NYLON	0.370	✗	✓	✓	✓
	TIE ROD BRACKET	Steel	0.45	✗	✓	✓	✓
	FIXING BRACKET	Steel	0.33	✓	✓	✓	✗
	F-UN2000	Steel	9.50	✗	✗	✓	✓
	ALIGNMENT BAR 500/750 1000/1500	Steel	2.60 -> 7.45	✗	✓	✓	✓
	LIFTING HOOK	Steel	2.13	✓	✓	✓	✓
	BRACE CONNECTOR	Steel	1.20	✓	✓	✓	✓
	CONNECTOR PLATE	Steel	0.85	✗	✗	✓	✓
	CORNER BAR STUD	Steel	0.35	✗	✗	✓	✓
	BAR CONNECTOR	Steel	0.30	✗	✗	✓	✓

GEOPLAST FORMWORK TECHNICAL GUIDELINES

A) SHORING

BRACE **CONNECTOR**



CONNECTOR **PLATE**



The shoring is performed using a steel bracket to connect push-pull props to the formwork. The brackets are available in various sizes to suit any commercially available props.

B) GROUND ANCHORING

FIXING **BRACKET**



WOODEN **ANCHORING**



Anchoring to the ground to avoid lifting of the formwork is done using metal brackets or otherwise with timber.

OPERATION AND MAINTENANCE REQUIREMENTS

POUR

Only immersion concrete vibrators are allowed. ABS formworks are not fireproof, so do not place them close to hot objects or open flame.

HANDLING

Use lifting clamp to lift the already assembled panels with a crane. Before lifting make sure that the lifting cables have an uniform draft.

PANEL CLEANSING

After every use, cleanse the panels with water (preferably with a pressure washer). Any deposit of concrete should be removed with a spatula or a wire brush.

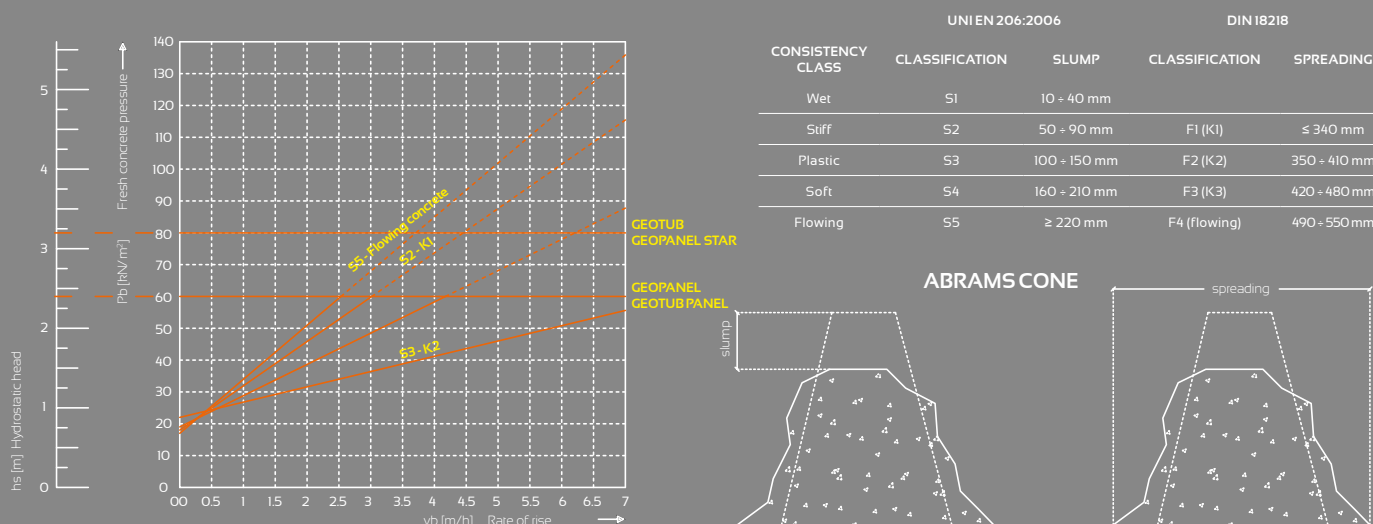
RELEASING AGENT

As long as the contact surface of the panels shows no signs of wear, no releasing agent is required.

STORAGE

In order to facilitate the handling and lifting of the panels and all accessories, store them on pallets or battens to keep them off the ground. Although the product does not suffer weathering, it is preferable to store the panels in a dry place away from direct sunlight.

RATE OF RISE DIAGRAM



SAFETY REQUIREMENTS

The operations of positioning, assembling, dismantling, plumbing, handling and cleaning of **GEOPANEL** products, as well as the pouring of the concrete, must be carried out by competent and properly trained personal or under supervision of the site manager or a Technician of Geoplast S.p.A., who must ensure that:

- All above mentioned operations are carried out properly,
- Every person working with the formworks is equipped with suitable tools and personal protective equipment to perform all necessary actions in full compliance of the safety standards,
- All panels and the supplied accessories are checked before use, discarding those which should not meet the minimum standard of reliability and safety because of the presence of any breakage and/or deformation,
- The formwork is installed on a perfectly flat surface, so as to work safely and ensure a perfect shoring and plumbing,
- All connection, alignment and plumb accessories of the formworks are properly tightened and secured to the ground before starting the pour.

Geoplast S.p.A. disclaims any liability or responsibility arising from improper use of **GEOPANEL** formwork. Any assembly of molds and/or use of accessories otherwise described in these guidelines must first be approved by Geoplast S.p.A.





GEOPLAST S.p.A.

35010 Grantorto PD - Italia - Via Martiri della Libertà, 6/8
tel +39 049 9490289 - fax +39 049 9494028
e-mail: geoplast@geoplast.it - www.geoplast.it

